

The Invisible Yellowstone National Park

VII. Image Appendix

A. Image Set 1: Old Faithful

Images in this section go with:

Lesson1, Section IV,
Lesson1 = The Invisible Yellowstone National Park
Section IV = Day 2: Infrared Old Faithful

- Image 1a
- Image 2a
- Image 3a
- Image 1b
- Image 2b
- Image 3b

Old Faithful is the most frequently erupting large geyser in Yellowstone National Park. A geyser is a hot spring which erupts periodically. These eruptions are caused by the buildup of hot water and steam trapped by constrictions in the "plumbing system" of a hot spring. When enough pressure builds up the geyser erupts.

Suggested questions for students:

- 1) Where are the hottest areas of the Old Faithful geyser?
- 2) Can you tell which way the breeze is blowing in the images?
- 3) How does the temperature of the steam change with distance from Old Faithful?
- 4) Do the infrared images give you information that you cannot get from the visible light images?
- 5) Do you have any other observations?

Image 1a



Visible light image of Old Faithful during the beginning of its eruption.

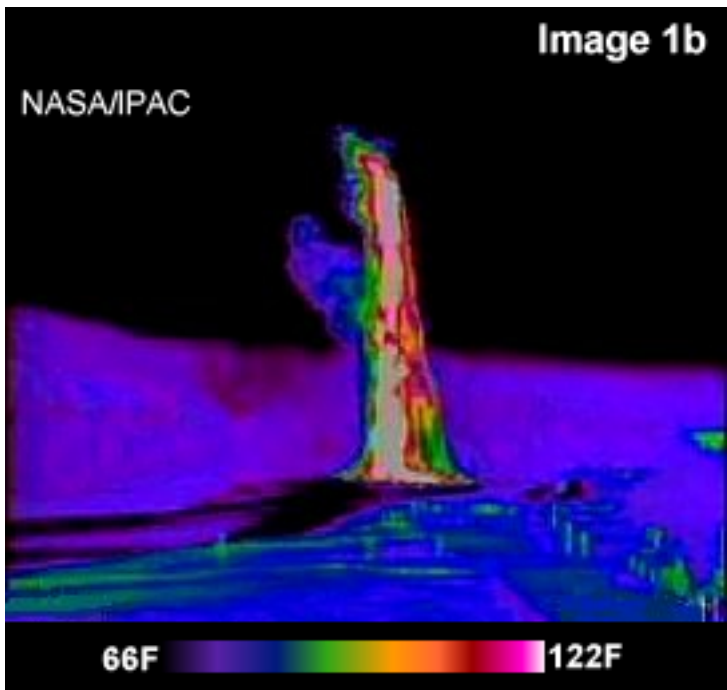
Image 2a



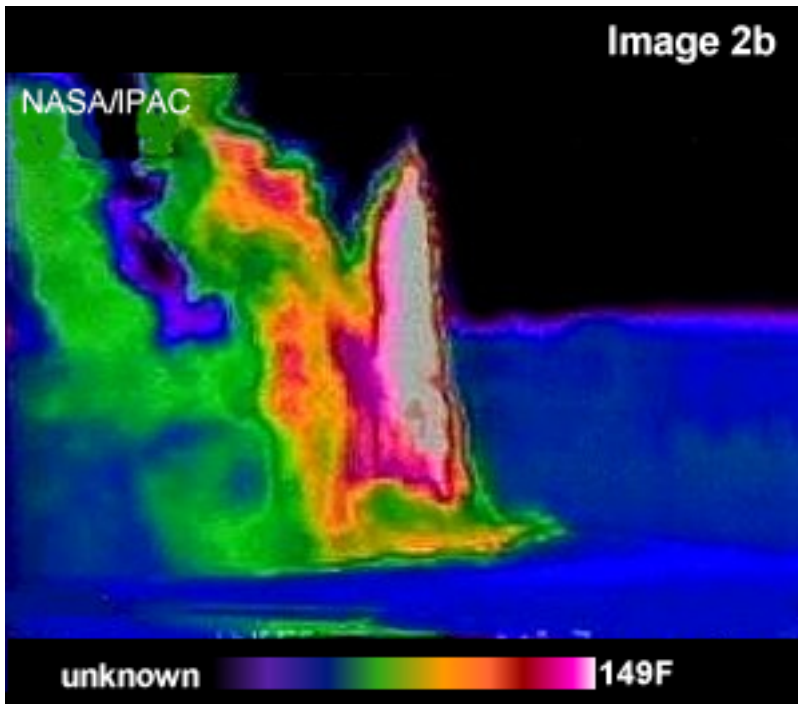
Visible light image of Old Faithful during the middle of its eruption.



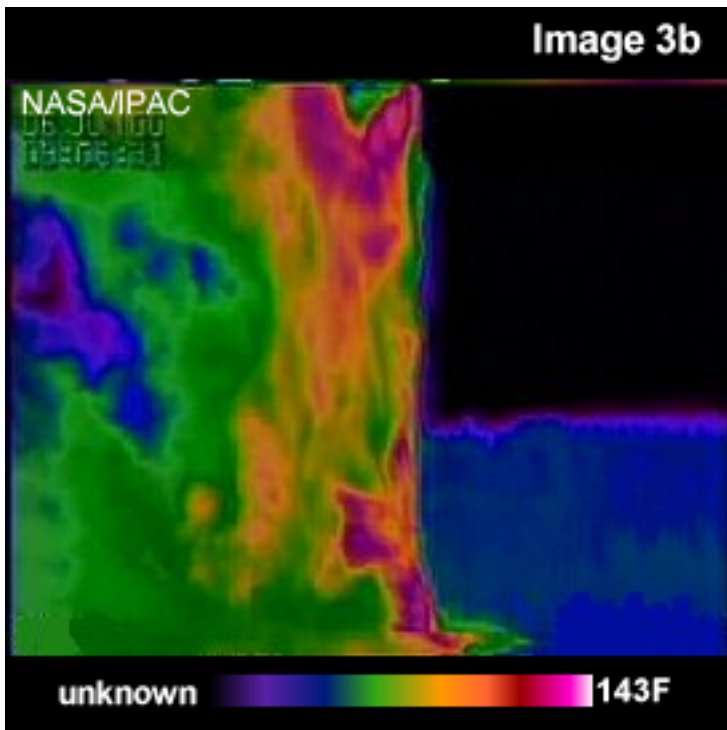
Visible light image of Old Faithful near the end of its eruption.



Infrared light image of Old Faithful during the beginning of its eruption.



Infrared light image of Old Faithful during the middle of its eruption.



Infrared light image of Old Faithful near the end of its eruption.